



PRODUCT DIMENSIONS & SPECIFICATIONS

FFW SERIES HYDRONIC CEILING MOUNT AIR HANDLERS

STANDARD FEATURES

APPLICATION VERSATILITY

Built in mounting tabs for ceiling or furr-down mounting. Louvered ceiling access panel has separate frame that attaches to ceiling joists. Solid access panel available for use with end return installations. Can be AHRI matched with most brands of air conditioners or heat pumps. ETL listed for use with either R22 or R410a when a proper metering device is used.

CABINET

Sturdy fully insulated galvanized steel cabinet with painted front panels.

ELECTRICAL CONTROLS

Units available with either circuit breakers or terminal blocks. Controls easily accessible from the front for easy service. Fan time delay relay standard for increased efficiency. Electrical connections can be made from the top, left, or right.

HYDRONIC HEATERS

Heating is provided by hydronic, 2,3 or 4 row heat kits with capacities from 17,500 to 60,000 BTU/HR. Hydronic heat kits can be easily installed in the field or can be ordered factory-installed. Totally lead free constructed coil. Suitable for potable applications.

BLOWER

Direct drive multi-speed blowers circulate air quietly and efficiently. 2-speed motors allow for precise air volume selection. Motor speeds can be easily selected via motor terminals. Blowers mounted on rails so they can be easily removed for service.

DX COIL

High efficiency rifled copper tubes/enhanced aluminum fins provide maximum heat transfer. All coils immersion tested at 500 psi then nitrogen pressurized and factory sealed for maximum reliability. Liquid-line Schrader allows pre-installation pressure testing. Available with either orifice or TXV metering device. Field-installable bolt-on TXVs are also available. Rugged GLN drain pan holds minimal condensate while eliminating the possibility of corrosion. Drain pan is UV safe. All drain connections are 3/4" FPT. Access door allows for coil cleaning.

WARRANTY

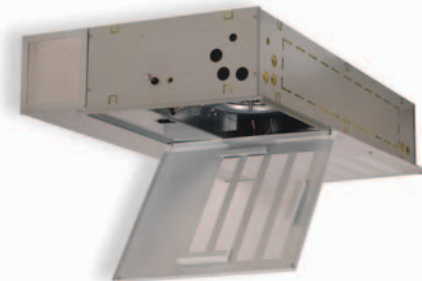
Five-year limited parts warranty.

OPTIONS

See options menu.



Representative image only. Some models may vary in appearance. Due to continuous product improvement, specifications are subject to change without notice.



Phone: 281.441.6500
Toll Free: 800.423.9007
Fax: 281.441.6510
www.aspenmfg.com



* For complete warranty details visit www.aspenmfg.com.

Revised 04/02/14. In keeping with its policy of continuous progress and product improvement, Aspen reserves the right to make changes without notice and incurring obligation. © 2014

HEATING AND COOLING PERFORMANCE AND ELECTRICAL DATA

MODEL	PERFORMANCE DATA						ELECTRICAL DATA	
	NOMINAL COOLING	HEATING COIL		HEATING CAPACITY BTU/HR at 3 GPM			MIN. CIR. AMPACITY	MAX FUSE OR CIRCUIT BREAKER
		ROWS	SIZE	120	140	180		
FFW24 18	1.5	2	10"X19"	17500	24000	37000	8.2	15
FFW27 24	2			20000	27500	42000		
FFW30 30	2.5		8"X48"	25000	35000	55000	14.8	
FFW33 36	3			27000	38000	60000		

* 70° EAT.

BLOWER DATA

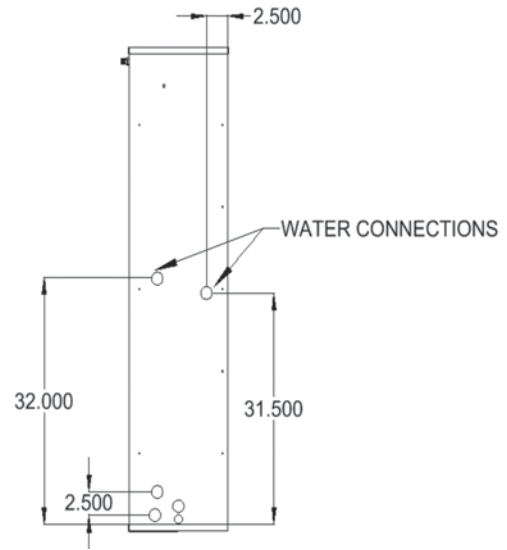
MODEL	MOTOR SPEED	MOTOR HP	MOTOR VOLTAGE	CFM V. EXTERNAL STATIC †				
				0.10	0.20	0.30	0.40	0.50
FFW24 18	LO	0.2/1	120	633	604	582	568	633
FFW27 24	HI	0.2/1		756	722	700	683	756
FFW30 30	LO	0.2/2		1196	1138	1094	1066	870
FFW33 36	HI	0.2/2		1352	1284	1240	1216	955

† Dry coil filter in place.

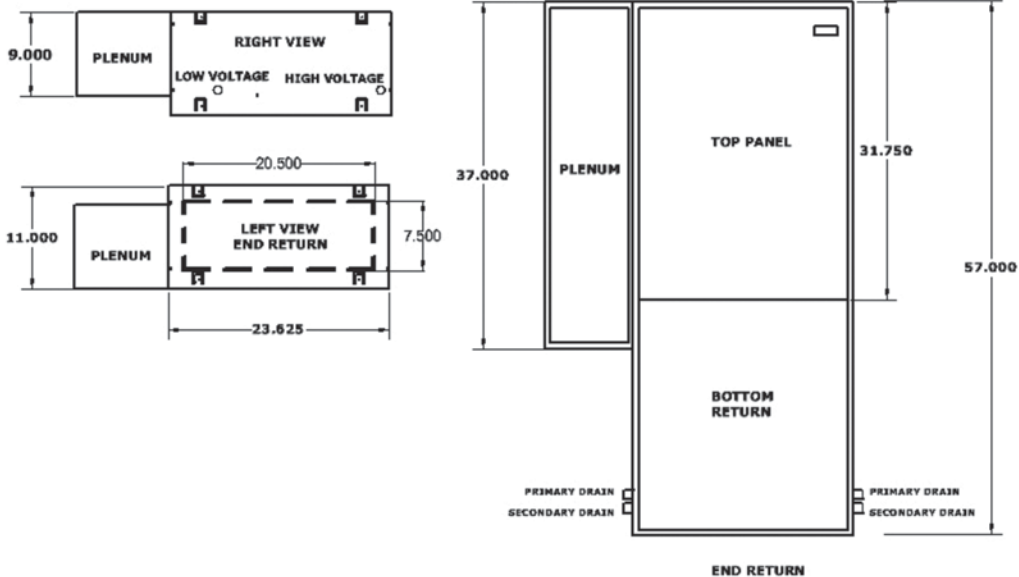
INSTALLATION CLEARANCES

	OPERATION	SERVICE
TOP	0"	0"
FRONT	0"	30"
SIDES	0"	0"
REAR	0"	0"

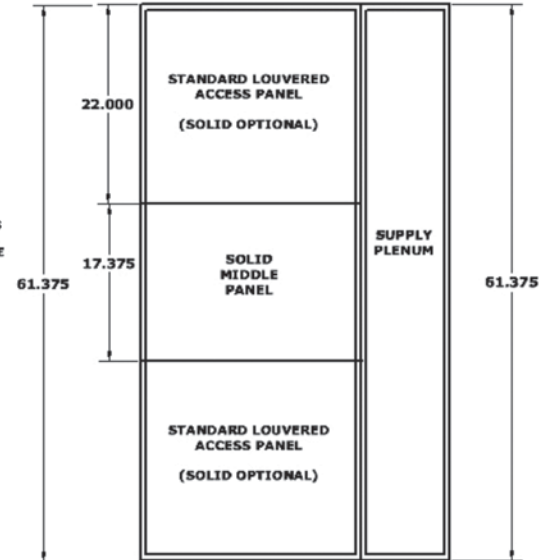
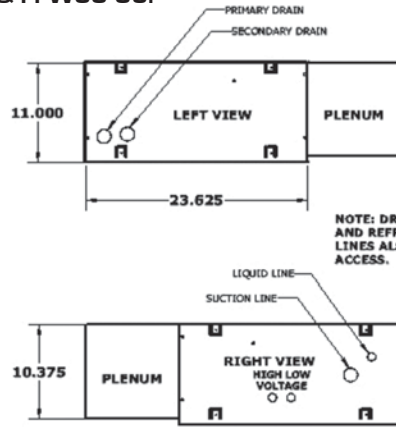
Plumbing connections for FFW24 18 & FFW27 24:



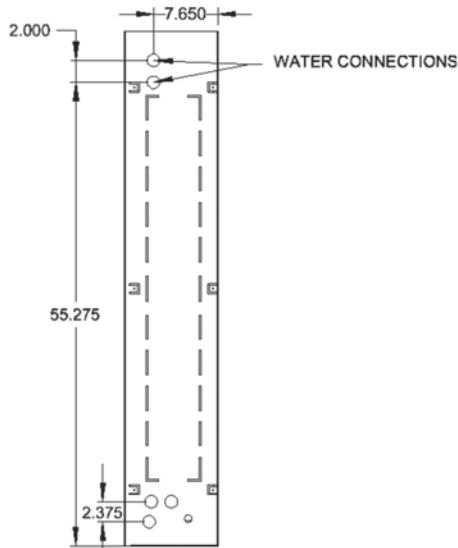
Dimensional drawing for FFW24 18 & FFW27 24:



Dimensional drawing for FFW30 30 & FFW33 36:

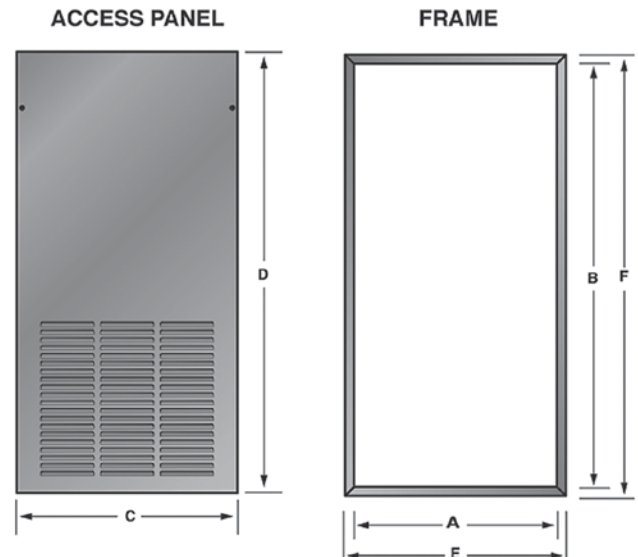


Plumbing connections for FFW30 30 & FFW33 36:



ACCESS PANEL DIMENSIONS AND SPECIFICATIONS

PANEL MODEL	FOR USE WITH	OPENING SIZE		PANEL DIMENSION		FRAME DIMENSION		# OF PANELS
		A	B	C	D	E	F	
CAD-5W(S/L)	FFW 18/24	23-7/8	57-5/8	25-7/8	59-5/8	25-3/4	59-1/2	2
WAD-4(S/L)	FFW 30/36	20-3/4	39-1/2	22-3/4	41-1/2	22-5/8	41-3/8	1



Phone: 281.441.6500
 Toll Free: 800.423.9007
 Fax: 281.441.6510
www.aspenmfg.com