

AEM SERIES ELECTRIC HEAT AIR HANDLER

HIGH-EFFICIENCY MULTI-POSITION



Unit shown with service panels removed. Representative image only. Some models may vary in appearance.

APPLICATION VERSATILITY

Upflow or horizontal right as shipped (field-convertible for downflow or horizontal left applications). Can be AHRI matched with most brands of air conditioners or heat pumps.

- A2L refrigerants require a Refrigerant Detection System (RDS) for compliance. In accordance to UL 60335 Refrigerant Detection Systems are factory-installed on A2L refrigerant ready air handlers.
- ETL listed for R22 and R410A. ETL listed for R454B and R32 with Refrigerant Detection System (RDS).

240V CONSTANT TORQUE ECM MOTOR

Pre-programmed, 5-speed, 208V/240V ECM motors that ensure higher efficiency and increased energy savings by delivering constant torque during operation. Motors are pre-programmed with speeds and torques at the factory for optimal performance and reliability. Direct drive blowers circulate air quietly and efficiently. Rail mounted blowers provide easy removal for service and maintenance.

BLOWER FOR ALL MP AHU (ALL ##M)

Direct drive blowers circulate air quietly and efficiently. Blowers mounted on rails so they can be easily removed for service.

ELECTRONIC CONTROL BOARD

Electronic circuit board provides 30 secs ON/OFF blower time delay extracting more heat/cool from the coil. Automotive-style pull fuse protection on the circuit board to provide low voltage and transformer protection.

LOW LEAKAGE CABINET

Sturdy, fully insulated galvanized steel cabinet; stick pins ensure 1/2" insulation remains in place. Unit ships with disposable filter. Less than 2% air leakage from cabinet when tested in accordance with ASHRAE standard 193. Unit must be installed according to Aspen installation instructions.

DX COIL

High-efficiency rifled copper tubes and enhanced aluminum fins provide maximum heat transfer. All coils are immersion tested at 500 psi, followed by nitrogen pressurization and

factory sealing to ensure optimal system integrity and long-term reliability.

Available with either orifice or TXV metering device. Field-installable bolt-on TXVs are also available. Heavy duty plastic drain pans on most models, powder coated galvanized steel horizontal drain pans standard on all. Optional galvanized metal drain pan with bottom primary and secondary drain connections or alternate right side primary option available. Fully insulated cabinets with faced insulation. Split access doors in front of cabinet for easy service access. ***Left/right-hand standard refrigerant and plumbing connections include:***

- o **Liquid line:** 3/4" ODS
- o **Condensate Drains:** 3/4" NPT
- o **Suction line:** 3/4" ODS on 1-1/2-ton to 3-ton
- ▶ 7/8" ODS on 3-1/2-ton to 5-ton
- o **Suction line:**
 - ▶ 3/4" ODS on 1-1/2-ton to 3-ton
 - ▶ 7/8" ODS on 3-1/2-ton to 5-ton

MODULAR ELECTRIC HEAT KITS

Heat kits available with either circuit breakers or terminal blocks. Available from 3 to 25 KW. Models with electric heat include sequencers and temperature limit switches for safe, efficient operation. Modules are easily installed in the field using molex plugs or can be ordered factory-installed. Controls are accessible from the front for easy service. Electrical connections can be made from the top or left. Disconnect does not protrude through the wall panel. Fan time delay relay standard for increased efficiency.

WARRANTY Ten-year limited parts warranty with registration.

OPTIONS Ask your local Aspen Sales Rep for options.

CUSTOMIZATION OPTIONS*

UNIVERSAL A2L REFRIGERANT TECHNOLOGY FOR R32 & R454B SYSTEMS



IDEAL FOR USE WITH ASPEN AIR HANDLERS, AS WELL AS CASED & UNCASD COILS!

Versa Pro coils are easily configurable for use with either R32 or R454B refrigerant with proper metering device. Utilizing universal Refrigerant Detection Systems (RDS) to ensure regulatory compliance.

OTHER POPULAR CUSTOM OPTIONS:

- Refrigerant Detection System (RDS) kit factory-installed.
- Factory or field-installed TXV available.

DOWNFLOW KIT OPTIONS:

METAL DRAIN PANS

- 16" DWNFLWM-16
- 18" DWNFLWM-18

PLASTIC DRAIN PANS

- DWNFLWP

AEM-SS-AH-007-A1



In keeping with its commitment to continuous improvement, Aspen Manufacturing reserves the right to make changes without notice and incurring obligation. To stay up-to-date with this product and Aspen's trusted line of coils, air handlers, and more, go to our website. © 2025 Aspen Manufacturing. All Rights Reserved



HEATING/COOLING PERFORMANCE & ELECTRICAL DATA											
MODEL	ELECTRIC HEAT KIT MODEL	PERFORMANCE DATA						ELECTRICAL DATA			
		HEATING		HEAT KIT		HEATING CAPACITY		MIN. CIRCUIT AMPACITY		MAX. BREAKER OR FUSE SIZE	
		KW		A		MBTUH		MCA			
		208V	240V	208V	240V	208V	240V	208V	240V	208V	240V
AEM 18/19	E(C,T)S00	0.0	0.0	0.0	0.0	0.0	0.0	3.5	3.5	15	15
	E(C,T)S03	2.3	3.0	11.1	12.5	7.8	10.2	17.0	19.1	20	20
	E(C,T)S05	3.8	5.0	18.3	20.8	13.0	17.1	25.1	28.5	30	30
	E(C,T)S08	6.1	8.0	29.3	33.3	20.8	27.3	39.6	45.2	40	50
	E(C,T)S10	7.6	10.0	36.5	41.7	25.9	34.1	46.8	53.5	50	60
AEM 24/25	E(C,T)S00	0.0	0.0	0.0	0.0	0.0	0.0	3.5	3.5	15	15
	E(C,T)S03	2.3	3.0	11.1	12.5	7.8	10.2	17.0	19.1	20	20
	E(C,T)S05	3.8	5.0	18.3	20.8	13.0	17.1	25.1	28.5	30	30
	E(C,T)S08	6.1	8.0	29.3	33.3	20.8	27.3	39.6	45.2	40	50
	E(C,T)S10	7.6	10.0	36.5	41.7	25.9	34.1	46.8	53.5	50	60
AEM 30/31	E(C,T)M00	0.0	0.0	0.0	0.0	0.0	0.0	5.1	5.1	15	15
	E(C,T)M03	2.3	3.0	11.1	12.5	7.8	10.2	18.6	20.8	20	25
	E(C,T)M05	3.8	5.0	18.3	20.8	13.0	17.1	26.8	30.1	30	35
	E(C,T)M08	6.1	8.0	29.3	33.3	20.8	27.3	41.3	46.8	45	50
	E(C,T)M10	7.6	10.0	36.5	41.7	25.9	34.1	48.4	55.1	50	60
	E(C,T)M15	11.3	15.0	54.3	62.5	38.6	51.2	48.4/21.6	55.1/25	50/25	60/25
AEM 36/37	E(C,T)M00	0.0	0.0	0.0	0.0	0.0	0.0	5.1	5.1	15	15
	E(C,T)M03	2.3	3.0	11.1	12.5	7.8	10.2	18.6	20.8	20	25
	E(C,T)M05	3.8	5.0	18.3	20.8	13.0	17.1	26.8	30.1	30	35
	E(C,T)M08	6.1	8.0	29.3	33.3	20.8	27.3	41.3	46.8	45	50
	E(C,T)M10	7.6	10.0	36.5	41.7	25.9	34.1	48.4	55.1	50	60
	E(C,T)M15	11.3	15.0	54.3	62.5	38.6	51.2	48.4/21.6	55.1/25	50/25	60/25
AEM 42/43/48/49/60/61/62	E(C,T)L00	0.0	0.0	0.0	0.0	0.0	0.0	9.5	9.5	15	15
	E(C,T)L05	3.8	5.0	18.3	20.8	13.0	17.1	31.1	34.5	35	35
	E(C,T)L10	7.6	10.0	36.5	41.7	25.9	34.1	52.8	59.5	60	60
	E(C,T)L15	11.3	15.0	54.3	62.5	38.6	51.2	52.8/21.6	59.5/25	60/25	60/25
	E(C,T)L20	15.0	20.0	72.1	83.3	51.2	68.3	52.8/43.3	59.5/50	60/45	60/50
	E(C,T)L25	18.8	25.0	90.4	104.2	64.2	85.3	52.8/43.3/21.6	59.5/50/25	60/45/25	60/50/25

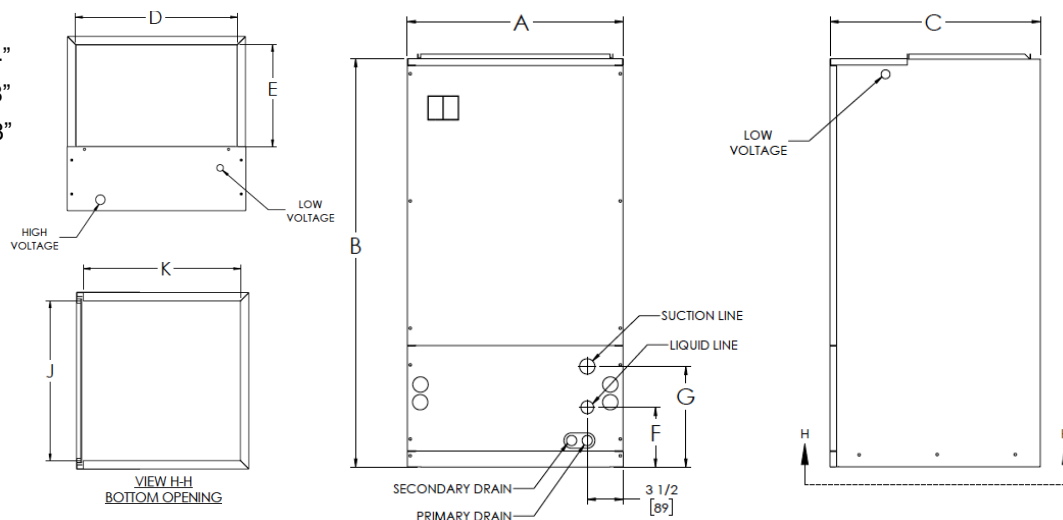
ELECTRIC HEAT KIT NOMENCLATURE			
HEAT KIT SERIES	POWER CONNECTION	CABINET SIZE & NOM. TON.	HEAT STRIP
E	C	S/M/L	KW
ELECTRIC HEAT	C = CIRCUIT BREAKER T = TERMINAL BLOCK	S (SMALL) 18-25 M (MEDIUM) 30-17 L (LARGE) 42-62	03 = 3 KW 05 = 5 KW 06 = 6 KW 08 = 8 KW 10 = 10 KW 15 = 15 KW 20 = 20 KW 25 = 25 KW

AIR HANDLER CHASSIS NOMENCLATURE			
AEM	NOM. TON.	METERING DEVICE	OPTION CODE
	MBTUH	F	-001
240V CONSTANT TORQUE ECM MULTI-POSITION AIR HANDLER	18 = 18,000 24 = 24,000 30 = 30,000 36 = 36,000 42 = 42,000 60 = 60,000	A1 REFRIGERANTS - R410A + R22	CUSTOMIZATION OPTIONS
		X = R22 (TXV NON-BLEED AC OR HP) 4 = R410A (TXV NON-BLEED AC OR HP) B = R22 (TXV 20% BLEED AC OR HP) G = R410A (FLOWRATOR) F = R22 (FLOWRATOR)	
		A2L REFRIGERANTS - R454B + R32	
		J = R454B (TXV NON-BLEED AC OR HP) D = R32 (TXV NON-BLEED AC OR HP) K = R454B (TXV 20% BLEED AC OR HP) N = R454B (PISTON) Z = R454B/R32 CONFIGURABLE M = R32 (PISTON) (Shipped with Piston)	

BLOWER DATA										
MODEL	240V ECM MOTOR			CFM VS EXTERNAL STATIC PRESSURE (WET COIL)						
	SPEED TAP	HP	AMP	0.1	0.2	0.3	0.4	0.5	0.6	0.7
AEM 18/19/ 24/25	T5	1/3	2.8	932	894	862	827	800	762	-
	T4			750	706	674	627	600	561	-
	T3			600	565	539	502	480	449	-
	T2			750	706	674	627	600	561	-
	T1			932	894	862	827	800	762	-
AEM 30/31/ 36/37	T5	1/2	4.1	1291	1280	1252	1227	1200	1171	-
	T4			1122	1091	1066	1034	1000	982	-
	T3			898	873	853	827	800	786	-
	T2			745	698	668	630	600	558	-
	T1			1291	1280	1252	1227	1200	1171	-
AEM 42/43/ 48/49/ 60/61/ 62	T5	1	7.6	2018	1987	1961	1922	1889	1856	1823
	T4			1738	1696	1667	1636	1598	1566	1527
	T3			1546	1521	1482	1439	1396	1360	1321
	T2			1367	1342	1303	1260	1217	1181	1142
	T1			2018	1987	1961	1922	1889	1856	1823

FIGURE 1

SUCTION LINE:
1.5T to 3.0T = 3/4"
3.5T to 5.0T = 7/8"
LIQUID LINE: 3/8"



AEM DIMENSIONS (In.)[mm.] - Figure 1													
MODEL	A	B	C	D	E	F	G	J	K	FILTER SIZE	SHIPPING INFO.		
											WEIGHT	QTY	
AEM 18	21 [533]	40 [1016]	20-1/2 [521]	18-3/4 [476]	12 [305]	7-1/4 [184]	10-1/4 [260]	18-1/2 [470]	18-1/2 [470]	16X20	99	4	
AEM 19/24/25	21 [533]	40 [1016]		18-3/4 [476]	12 [305]	8-1/4 [209]	12-1/4 [311]	18-1/2 [470]		16X20	100		
AEM 30	21 [533]	49-1/4 [1251]		18-3/4 [476]	12 [305]	8-1/4 [209]	14-1/4 [362]	18-1/2 [470]		16X20	118		
AEM 36	21 [533]	49-1/4 [1251]		18-3/4 [476]	12 [305]	10-1/4 [260]	16-1/4 [412]	18-1/2 [470]		16X20	118		
AEM 31/37	21 [533]	49-1/4 [1251]		18-3/4 [476]	12 [305]	10-1/4 [260]	16-1/4 [412]	18-1/2 [470]		16X20	147		
AEM 42	24-1/2 [622]	57 [1448]		22-1/4 [565]	14-3/4 [375]	11 [279]	16 [406]	22 [559]		20X20	153		
AEM 48	24-1/2 [622]	57 [1448]		22-1/4 [565]	14-3/4 [375]	13 [330]	18 [457]	22 [559]		20X20	180		
AEM 43/49/60/62	24-1/2 [622]	57 [1448]		22-1/4 [565]	14-3/4 [375]	13 [330]	18 [457]	22 [559]		20X20	180		
AEM 61	24-1/2 [622]	57 [1448]		22-1/4 [565]	14-3/4 [375]	15 [381]	20 [508]	22 [559]		20X20	200		

To stay up-to-date with this product and Aspen's trusted line of coils, air handlers, and more, go to our website. © 2025 Aspen Manufacturing. All Rights Reserved.