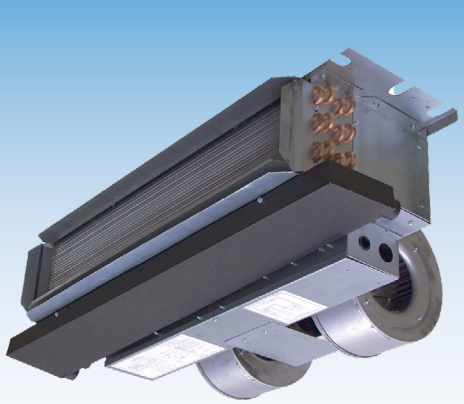


CASED & UNCASED CEILING MOUNT PES/T SERIES AIR HANDLER ECM ELECTRIC HEAT DX COOL

FEATURES, BENEFITS, DIMENSIONS, & SPECIFICATIONS



Unit shown with service panels removed. Representative drawing only. Some models may vary in appearance. Due to continuous product improvement, specifications are subject to change without notice.

WARRANTY

**ONE YEAR LIMITED
PARTS WARRANTY**

DIRECT EXPANSION COIL

High efficiency rifled copper tube/enhanced aluminum fins provide maximum heat transfer. All coils immersion tested at 500 psi then nitrogen pressurized and factory sealed for maximum reliability. Liquid-line Schrader allows pre-installation pressure testing. Available with either orifice or TXV metering device factory installed. Field-installable bolt-on TXVs is also available. Primary & secondary condensate drain. All drain connections are 3/4" NPT. Powder-painted metal drain pan. Access door allows for coil cleaning.

- ETL listed for use with R-22, R-410A, R-454B, and R-32 when a proper metering device is used.
- In accordance to UL 60335 Refrigerant Detection Systems are field-installed on A2L refrigerant ready air handlers.

APPLICATION VERSATILITY

Built in mounting tabs for ceiling or fur-down mounting. Louvered ceiling access panel has separate frame that attaches to ceiling joists. Solid access panel available for use with end return installations. Compatible with most brands of air conditioners or heat pumps. Field convertible front and bottom return. Wall hanging bracket included standard.

MOTOR

Constant torque ECM allows motor speed control with embedded software. Motors are pre-programmed at the factory.

ELECTRONIC CONTROL BOARD

Electronic circuit board provides 30 secs ON/OFF blower time delay extracting more heat/cool from the coil.

ELECTRIC HEAT KITS

Heat kits available in 3, 5, 6, 8, & 10 KW. Models with electric heat include sequencers and temperature limit switches for safe, efficient operation. Easily accessible controls for quick service.

LOW LEAKAGE CABINET

Less than 2% air leakage from cabinet when tested in accordance with ASHRAE standard 193. Unit must be installed according to Aspen installation instructions. Sturdy, fully insulated galvanized steel cabinet with knockout for duct return.



WANT MORE INFORMATION ON THE ASPENPRO PES/T SERIES CEILING MOUNT AIR HANDLERS?

SCAN QR CODE TO VISIT THIS PRODUCT ON OUR WEBSITE

*For complete warranty details, please visit our Warranty Information tab when you visit Aspen's website.
To view this coil's product information online for the most up-to-date information scan the QR Code.*

In keeping with its commitment to continuous improvement, Aspen Manufacturing reserves the right to make changes without notice and incurring obligation. To stay up-to-date with this product and Aspen's trusted line of coils, air handlers, and more, go to our website. AP-PES-PET-Spec-2025-03

PE(S/T) HEATING/COOLING PERFORMANCE & ELECTRICAL DATA

MODEL	PERFORMANCE DATA						ELECTRICAL DATA				
	NOM. COOL. (BTU)	ELECTRIC HEAT KIT	MIN. SPEED TAP	HEATING (KW)		TOT. AMPS (A)		MIN. CIRCUIT AMPACITY (MCA2)		MAX. BREAKER OR FUSE SIZE (MEU2)	
				208V	240V	208V	240V	208V	240V	208V	240V
PE(S/T) 23/27	18,000	HTS00	-	0.0	0.0	4.0	4.0	5.0	5.0	15A	15A
		HTS03	T1	2.3	3.0	14.8	16.5	18.5	20.6	20A	25A
		HTS05	T2	3.6	4.8	21.3	24.0	26.6	30.0	30A	30A
		HTS06	T3	4.5	6.0	25.6	29.0	32.0	36.3	35A	40A
		HTS08	T4	6.0	8.0	32.8	37.3	41.1	46.7	45A	50A
		HTS10	T5	7.2	9.6	38.6	44.0	48.3	55.0	50A	60A
PE(S/T) 26/28	24,000	HTS00	-	0.0	0.0	4.0	4.0	5.0	5.0	15A	15A
		HTS03	T1	2.3	3.0	14.8	16.5	18.5	20.6	20A	25A
		HTS05	T2	3.6	4.8	21.3	24.0	26.6	30.0	30A	30A
		HTS06	T3	4.5	6.0	25.6	29.0	32.0	36.3	35A	40A
		HTS08	T4	6.0	8.0	32.8	37.3	41.1	46.7	45A	50A
		HTS10	T5	7.2	9.6	38.6	44.0	48.3	55.0	50A	60A
PE(S/T) 29/33/35	30,000	HTS00	-	0.0	0.0	4.0	4.0	5.0	5.0	15A	15A
		HTS03	T1	2.3	3.0	14.8	16.5	18.5	20.6	20A	25A
		HTS05	T2	3.6	4.8	21.3	24.0	26.6	30.0	30A	30A
		HTS06	T3	4.5	6.0	25.6	29.0	32.0	36.3	35A	40A
		HTS08	T4	6.0	8.0	32.8	37.3	41.1	46.7	45A	50A
		HTS10	T5	7.2	9.6	38.6	44.0	48.3	55.0	50A	60A
PE(S/T) 34/38	36,000	HTS00	-	0.0	0.0	4.0	4.0	5.0	5.0	15A	15A
		HTS03	T1	2.3	3.0	14.8	16.5	18.5	20.6	20A	25A
		HTS05	T2	3.6	4.8	21.3	24.0	26.6	30.0	30A	30A
		HTS06	T3	4.5	6.0	25.6	29.0	32.0	36.3	35A	40A
		HTS08	T4	6.0	8.0	32.8	37.3	41.1	46.7	45A	50A
		HTS10	T5	7.2	9.6	38.6	44.0	48.3	55.0	50A	60A

PE(S/T) BLOWER DATA

MODEL	SPEED TAP	MOTOR			CFM VS. EXTERNAL STATIC (DRY COIL)				
		HP	FLA	VOLT	0.1	0.2	0.3	0.4	0.5
PE(S/T) 23/26	T5	1/2	4.0	240	900	850	805	765	650
	T4				840	805	760	705	595
	T3				805	460	705	665	565
	T2				705	665	615	580	495
	T1				655	605	555	500	425
PE(S/T) 27	T5	1/2	4.0	240	975	925	875	835	710
	T4				915	865	815	780	660
	T3				865	825	780	730	620
	T2				805	760	695	655	560
	T1				730	675	615	565	480

In keeping with its commitment to continuous improvement, Aspen Manufacturing reserves the right to make changes without notice and incurring obligation. To stay up-to-date with this product and Aspen's trusted line of coils, air handlers, and more, go to our website. AP-PES-PET-Spec-2025-03

PE(S/T) BLOWER DATA - CONTINUED

MODEL	ECM MOTOR				CFM VS. EXTERNAL STATIC (DRY COIL)				
	SPEED TAP	HP	FLA	VOLT	0.1	0.2	0.3	0.4	0.5
PE(S/T) 28	T5	1/2	4.0	240	1180	1130	1070	1015	860
	T4				1115	1060	1015	950	810
	T3				1015	950	900	860	730
	T2				910	850	795	745	630
	T1				815	745	685	640	454
PE(S/T) 29/34	T5				1195	1140	1085	1050	890
	T4				1115	1060	1015	965	820
	T3				1000	950	895	850	725
	T2				920	860	805	745	630
	T1				815	760	700	640	545
PE(S/T) 33	T5				1220	1165	1115	1060	900
	T4				1140	1100	1060	1000	850
	T3				1010	965	910	860	730
	T2				885	860	775	735	625
	T1				815	765	705	665	565
PE(S/T) 35/38	T5	1305	1255	1195	1130	960			
	T4	1230	1165	1115	1070	910			
	T3	1130	1085	1040	1000	850			
	T2	1045	980	935	900	765			
	T1	935	885	810	775	650			

PE(S/T) AIR HANDLER CHASSIS NOMENCLATURE

BRAND	VOLTAGE	CONFIGUR.	NOM. TON.	METERING DEVICE	OPTION CODE
P	E	S/T	23	4	-000
ASPEN PRO	240V ECM MOTOR CONSTANT TORQUE ELECTRIC AIR HANDLER	S = Uncased Ceiling Mount T = Cased Ceiling Mount	18 = 18,000 24 = 24,000 30 = 30,000 36 = 36,000 (MBTUH)	A1 METERING DEVICE 4 = R410A (TXV NON-BLEED A/C or H/P) X = R22 (TXV NON-BLEED A/C or H/P) B = R22 (TXV 20% BLEED A/C or H/P) F = R22 (PISTON) G = R410A (PISTON) A2L METERING DEVICE J = R454B (TXV NON-BLEED A/C or H/P) K = R454B (TXV 20% BLEED A/C or H/P) D = R32 (TXV NON-BLEED A/C or H/P) M = R32 (PISTON) N = R454B (PISTON)	OPTION CODE

ELECTRIC HEAT NOMENCLATURE

HEAT KIT SERIES	POWER CONNECTION	CABINET SIZE & NOM. TON.	HEAT STRIP
H	T	S	10
ELECTRIC HEAT	INTERRUPTION T = TERMINAL BLOCK	S = SMALL CABINET (18-37)	00 = 0 KW 06 = 6 KW 03 = 3 KW 08 = 8 KW 05 = 5 KW 10 = 10 KW

In keeping with its commitment to continuous improvement, Aspen Manufacturing reserves the right to make changes without notice and incurring obligation. To stay up-to-date with this product and Aspen's trusted line of coils, air handlers, and more, go to our website. AP-PES-PET-Spec-2025-03

ACCESS DOOR

VERSATILITY

Equipped with hidden frame feature. Fastens to the outside wall surface and does not have to perfectly match the hole opening. Frame screws are not visible after installation. Available in either solid (S) or Louvered (L) style.

MATERIALS

Galvanized steel construction with smooth powder paint finish.

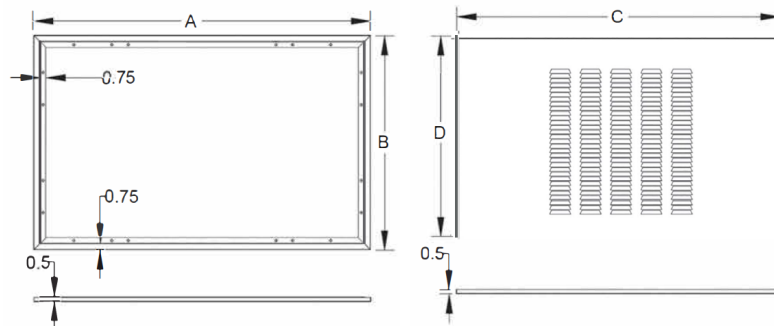
FILTER

20" x 20" x 1" field supplied.

ACCESS DOOR DIMENSIONS (In.) - FIGURE 1

PANEL MODEL	FOR USE WITH	A	B	C	D	FILTERS (QTY)
PE(S/T)23/26	GAD-1(S/L)	43-1/2	27-1/2	41-1/2	26	1
PE(S/T)27	GAD-5(S/L)	49-1/2		47-1/2		2
PE(S/T)28/29/34	GAD-2(S/L)	55-1/2		53-1/2		2
PE(S/T)33/35/38	GAD-6(S/L)	63-1/2		61-1/2		2

FIGURE 1



CAP KIT PART NUMBER (In.)

MODEL NUMBER	UNIT MODEL	ENCLOSURE SIZE
PET23/26	CAP-1	40X24X11
PET27	CAP-2	46X24X11
PET28/29/33/34	CAP-3	52X24X11
PET35/38	CAP-4	60X24X11

NOTE: CAP kit is an insulated panel that covers the entire bottom opening and is utilized for optional ducted return configuration.

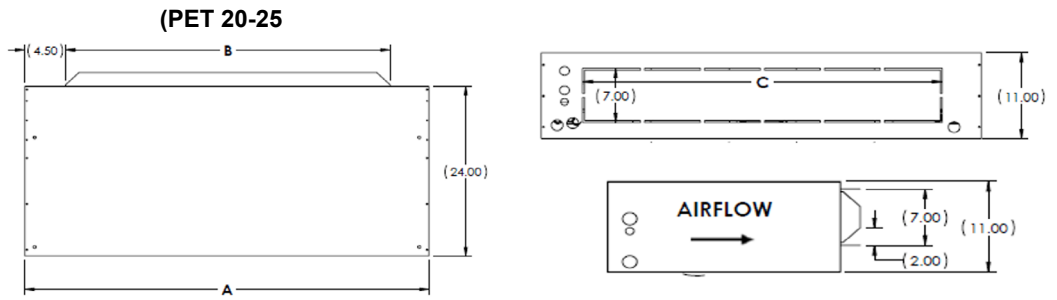
PET SERIES - CHASSIS DIMENSIONS (In.) - FIGURE 2

UNIT MODEL	A	B	C	WEIGHT (LB)	SKID QTY.
PET23/26	40 [1016]	30 [762]	30 [762]	135	5
PET27	46 [1168]	36 [914]	36 [914]	145	
PET28/29/34	52 [1321]	42 [1067]	42 [1067]	155	
PET33/35/38	60 [1524]	48 [1219]	48 [1219]	175	

In keeping with its commitment to continuous improvement, Aspen Manufacturing reserves the right to make changes without notice and incurring obligation. To stay up-to-date with this product and Aspen's trusted line of coils, air handlers, and more, go to our website.

AP-PES-PET-Spec-2025-03

FIGURE 2



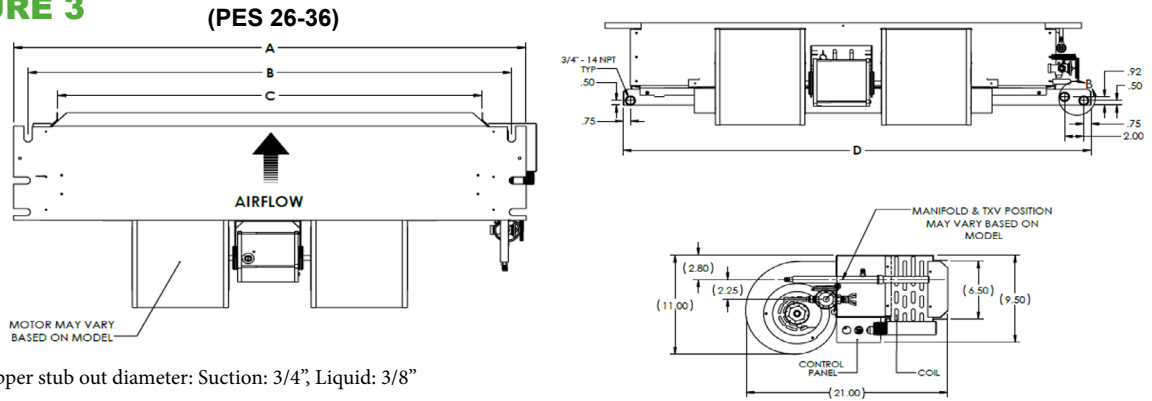
Copper stub out diameter: Suction: 3/4", Liquid: 3/8"

Knockout for ducted return (Ducted return requires remote filter grille (field supplied) and non-louvered panel)

PES SERIES - ENCLOSURE DIMENSIONS (In.) - FIGURE 3

UNIT MODEL	A	B	C	WEIGHT (LB)	SKID QTY.
PES 23/26	37-1/4	34-5/8	30	135	8
PES 27	43-1/4	40-5/8	36	145	5
PES 28/29/34	49-1/4	46-5/8	42	155	4
PES 33/35/38	56-1/4	53-5/8	48	175	5

FIGURE 3



Note: Copper stub out diameter: Suction: 3/4", Liquid: 3/8"

In keeping with its commitment to continuous improvement, Aspen Manufacturing reserves the right to make changes without notice and incurring obligation. To stay up-to-date with this product and Aspen's trusted line of coils, air handlers, and more, go to our website. AP-PES-PET-Spec-2025-03